

# DRAFT COASTAL ZONE MANAGEMENT PLAN TAMIL NADU

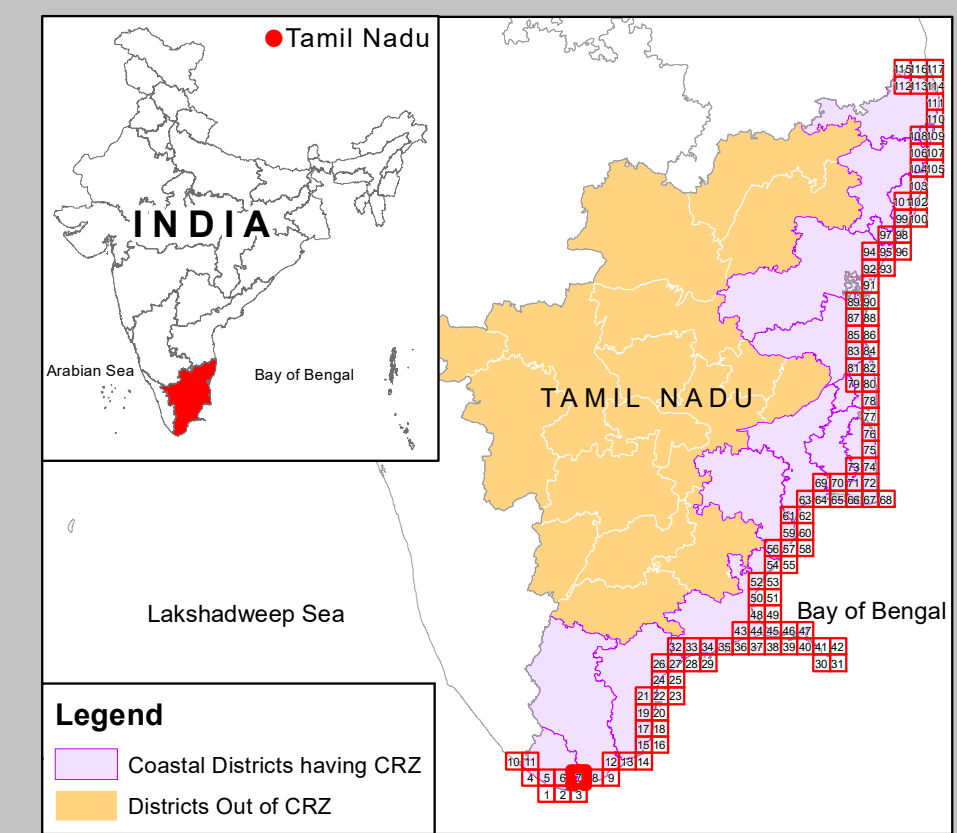
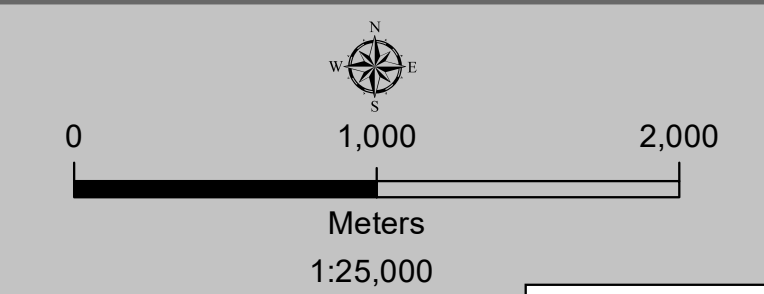
Kanniyakumari & Tirunelveli Districts

Edition: June, 2023

Sheet No: C 43 X 12 / NW

Projection :- UTM Datum :- WGS 1984

Map No : TN 7



### Legend

- Coastal Districts having CRZ
- Districts Out of CRZ

### Legend

- Lighthouse
- Fish Landing Centre
- Fishing Harbour
- Fishing Port
- Helipad
- Health Center/Hospital
- Multipurpose Evacuation Centre
- Educational Institution
- Road
- Railway Line
- Seawall
- High Tide Line
- Low Tide Line
- Port Limit
- Fish Drying or Boat Parking Area
- Fisherman Settlement
- Fishing Wards
- Breakwater/Jetty/Groyne
- Survey Plots
- Village Boundary
- Municipal/Urban Boundary
- Taluk Boundary
- District Boundary

### CRZ Lines & Boundary

- Hazard Line
- 20m CRZ Line for Island\*
- 50m CRZ Line - CRZ IIIA (NDZ)
- 200m CRZ Line - CRZ IIIB (NDZ)
- CVCA Boundary
- CRZ Boundary
- Sand Dune Beyond CRZ Boundary (500m Line, 50m Line for Bay, 50m or width of the creek whichever is less along the tidal influenced water bodies and 50m Mangrove Buffer Zone)

### CRZ CATEGORY

- CRZ - I**
  - Eco Sensitive Zone - CRZ IA
  - CRZ - IA
  - 50 m Mangrove Buffer Zone - CRZ IA
  - CRZ - IB
- CRZ - II**
  - CRZ - II
- CRZ - III**
  - No Development Zone
  - 50 to 500m from HTL - CRZ IIIA
  - 200 to 500m from HTL - CRZ IIIB
- CRZ - IV**
  - CRZ - IVB
  - CRZ - IVA (Upto 12 NM)

### ABBREVIATIONS

- CRZ : Coastal Regulation Zone
- NDZ : No Development Zone
- CVCA : Critically Vulnerable Coastal Areas

### NOTE

- CRZ - I areas are further classified on Land Use map and CZMP map shall be used along with Coastal Land Use map.
- 50m Mangrove Buffer Zone is provided for both Government land and Private land
- ISLANDS: 20m CRZ Line from HTL is valid only after approval of IMP of the particular island. IMPs of the particular island shall be prepared by concerned States/UTs and got approved by MoEF&CC.

Updated During 2019 - 2022

### DATA SOURCE

- National Centre for Sustainable Coastal Management
  - 1) HTL, LTL 2) CVCA 3) CRZ - IA 4) Infrastructure Facilities such as Lighthouse, Road, Seawall, Breakwater/Jetty/Groyne.
- Survey of India
  - 1) Hazard Line
- Tamil Nadu State Coastal Zone Management Authority
  - 1) Administrative Boundaries,
  - 2) Infrastructure Facilities such as Health Center/Hospital, Helipad, Multipurpose Evacuation Centre, Education Institution, Fish Landing Centre, Fishing Harbour, Fish Drying or Boat Parking Area,
  - 3) Fisherman Settlement & Fishing ward,
  - 4) Port Limit etc.

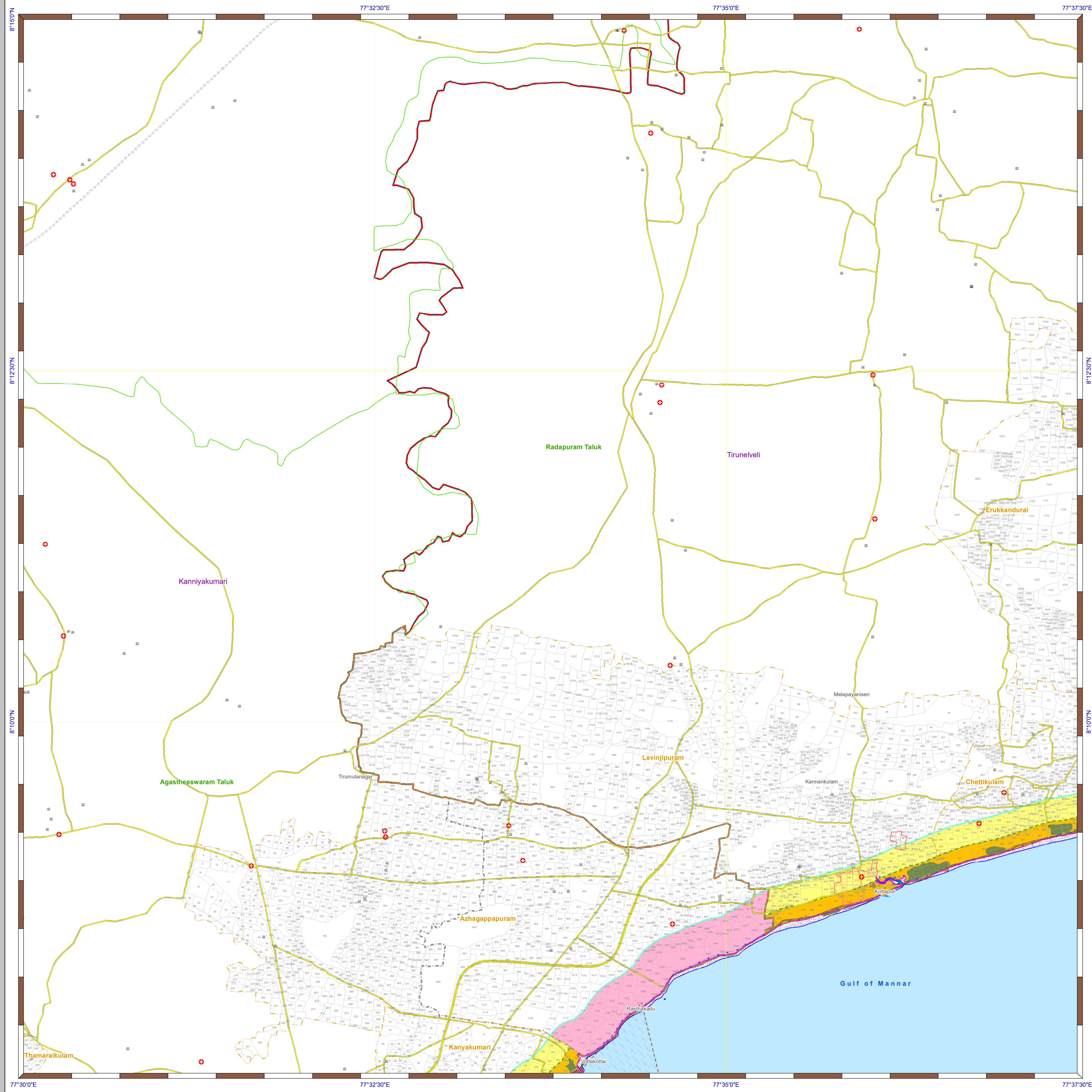
PREPARED AS PER COASTAL REGULATION ZONE NOTIFICATION, 2019



National Centre for Sustainable Coastal Management  
(Ministry of Environment, Forest & Climate Change)  
Chennai - 600 025



Department of Environment and Climate Change  
Government of Tamil Nadu

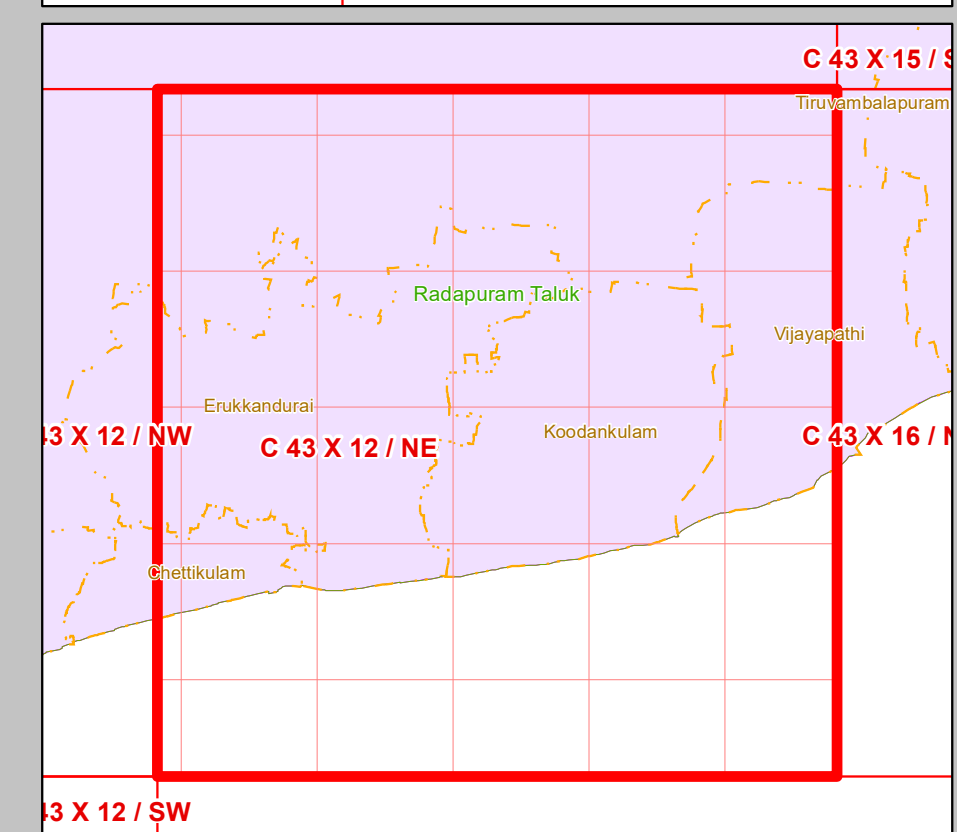
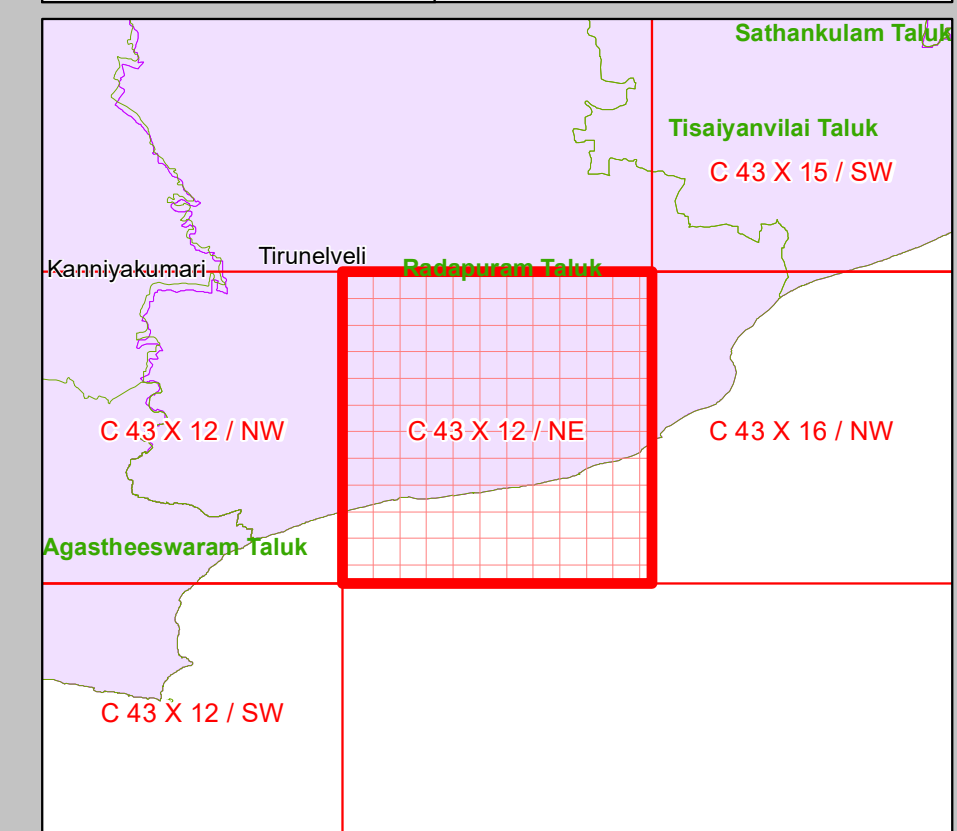
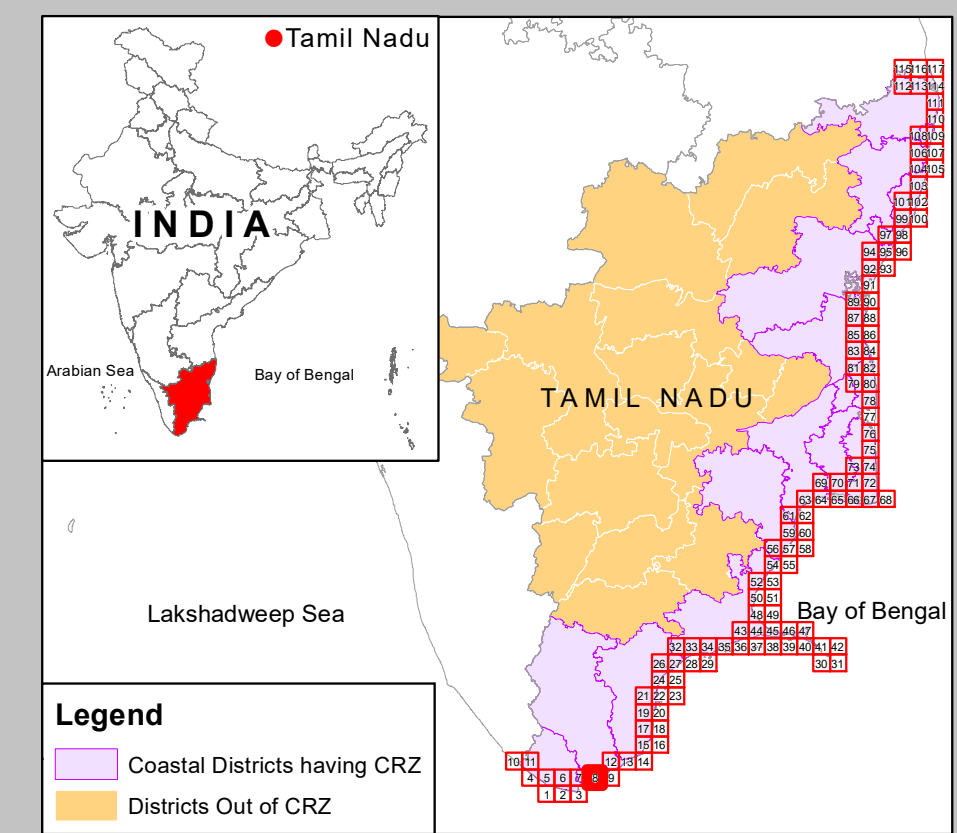
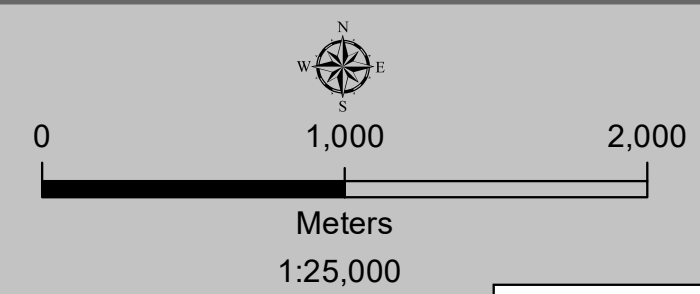




# DRAFT COASTAL ZONE MANAGEMENT PLAN TAMIL NADU

Tirunelveli District

Sheet No: C 43 X 12 / NE  
 Edition: June, 2023  
 Projection :- UTM Datum :- WGS 1984  
 Map No : TN 8



- ### Legend
- Lighthouse
  - Fish Landing Centre
  - Fishing Harbour
  - Fishing Port
  - Helipad
  - Health Center/Hospital
  - Multipurpose Evacuation Centre
  - Educational Institution
  - Road
  - Railway Line
  - Seawall
  - High Tide Line
  - Low Tide Line
  - Port Limit
  - Fish Drying or Boat Parking Area
  - Fisherman Settlement
  - Fishing Wards
  - Breakwater/Jetty/Groyne
  - Survey Plots
  - Village Boundary
  - Municipal/Urban Boundary
  - Taluk Boundary
  - District Boundary

- ### CRZ Lines & Boundary
- Hazard Line
  - 20m CRZ Line for Island\*
  - 50m CRZ Line - CRZ IIA (NDZ)
  - 200m CRZ Line - CRZ IIB (NDZ)
  - CVCA Boundary
  - CRZ Boundary
  - Sand Dune Beyond CRZ Boundary  
(500m Line, 50m Line for Bay, 50m or width of the creek whichever is less along the tidal influenced water bodies and 50m Mangrove Buffer Zone)

- ### CRZ CATEGORY
- #### CRZ - I
- Eco Sensitive Zone - CRZ IA
  - CRZ - IA
  - 50 m Mangrove Buffer Zone - CRZ IA
  - CRZ - IB
- #### CRZ - II
- CRZ - II
- #### CRZ - III
- No Development Zone
  - 50 to 500m from HTL - CRZ IIA
  - 200 to 500m from HTL - CRZ IIB
- #### CRZ - IV
- CRZ - IVB
  - CRZ - IVA (Upto 12 NM)

- ### ABBREVIATIONS
- CRZ : Coastal Regulation Zone
  - NDZ : No Development Zone
  - CVCA : Critically Vulnerable Coastal Areas

- ### DATA SOURCE
- I) National Centre for Sustainable Coastal Management
    - 1) HTL, LTL 2) CVCA 3) CRZ - IA 4) Infrastructure Facilities such as Lighthouse, Road, Seawall, Breakwater/Jetty/Groyne.
  - II) Survey of India
    - 1) Hazard Line
  - III) Tamil Nadu State Coastal Zone Management Authority
    - 1) Administrative Boundaries,
    - 2) Infrastructure Facilities such as Health Center/Hospital, Helipad, Multipurpose Evacuation Centre, Education Institution, Fish Landing Centre, Fishing Harbour,
    - 3) Fish Drying or Boat Parking Area,
    - 4) Fisherman Settlement & Fishing ward,
    - 5) Port Limit etc.

- ### NOTE
- 1) CRZ - I areas are further classified on Land Use map and CZMP map shall be used along with Coastal Land Use map.
  - 2) 50m Mangrove Buffer Zone is provided for both Government land and Private land
  - 3) ISLANDS: 20m CRZ Line from HTL is valid only after approval of IMP of the particular island. IMPs of the particular island shall be prepared by concerned States/UTs and got approved by MoEF&CC.

Updated During 2019 - 2022

PREPARED AS PER COASTAL REGULATION ZONE NOTIFICATION, 2019

Prepared by

**National Centre for Sustainable Coastal Management**  
 (Ministry of Environment, Forest & Climate Change)  
 Chennai - 600 025

**Department of Environment and Climate Change**  
 Government of Tamil Nadu

# DRAFT COASTAL ZONE MANAGEMENT PLAN TAMIL NADU

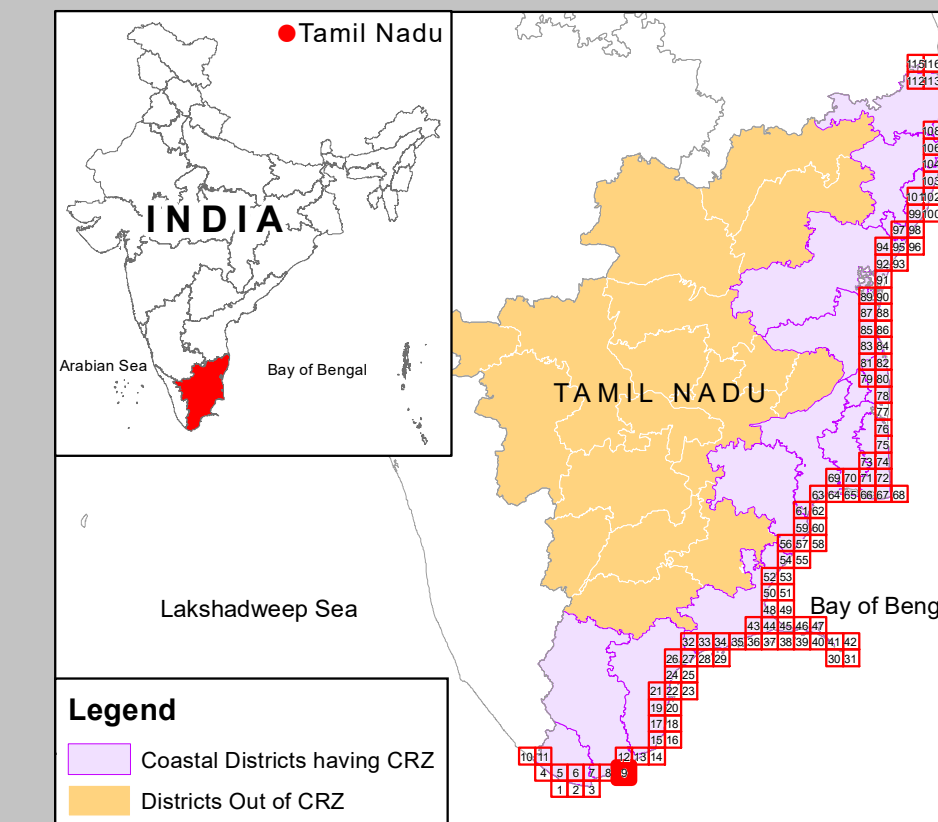
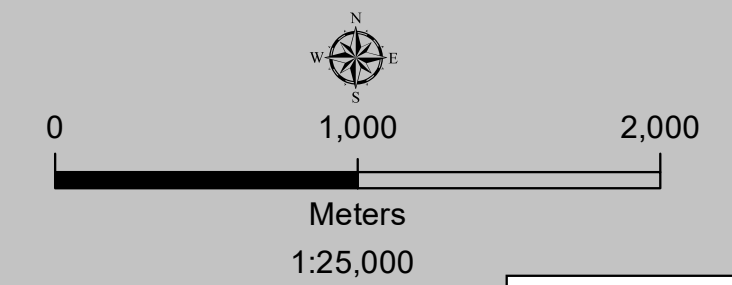
Tirunelveli District

Edition: June, 2023

Sheet No: C 43 X 16 / NW

Projection :- UTM Datum :- WGS 1984

Map No : TN 9



### Legend



### Legend

- Lighthouse
- Fish Landing Centre
- Fishing Harbour
- Fishing Port
- Helipad
- Health Center/Hospital
- Multipurpose Evacuation Centre
- Educational Institution
- Road
- Railway Line
- Seawall
- High Tide Line
- Low Tide Line
- Port Limit
- Fish Drying or Boat Parking Area
- Fisherman Settlement
- Fishing Wards
- Breakwater/Jetty/Groyne
- Survey Plots
- Municipal/Urban Boundary
- Village Boundary
- Taluk Boundary
- District Boundary

### CRZ Lines & Boundary

- Hazard Line
- 20m CRZ Line for Island\*
- 50m CRZ Line - CRZ IIIA (NDZ)
- 200m CRZ Line - CRZ IIIB (NDZ)
- CVCA Boundary
- CRZ Boundary
- Sand Dune Beyond CRZ Boundary  
(500m Line, 50m Line for Bay, 50m or width of the creek whichever is less along the tidal influenced water bodies and 50m Mangrove Buffer Zone)

### CRZ CATEGORY

- CRZ - I**
  - Eco Sensitive Zone - CRZ IA
  - CRZ - IA
  - 50 m Mangrove Buffer Zone - CRZ IA
- CRZ - II**
  - CRZ - II
- CRZ - III**
  - No Development Zone
  - 50 to 500m from HTL - CRZ IIIA
  - 200 to 500m from HTL - CRZ IIIB
- CRZ - IV**
  - CRZ - IVB
  - CRZ - IVA (Upto 12 NM)

### ABBREVIATIONS

- CRZ : Coastal Regulation Zone
- NDZ : No Development Zone
- CVCA : Critically Vulnerable Coastal Areas

### NOTE

- 1) CRZ - I areas are further classified on Land Use map and CZMP map shall be used along with Coastal Land Use map.
- 2) 50m Mangrove Buffer Zone is provided for both Government land and Private land
- 3) ISLANDS: 20m CRZ Line from HTL is valid only after approval of IMP of the particular island. IMPs of the particular island shall be prepared by concerned States/UTs and got approved by MoEF&CC.

Updated During 2019 - 2022

### DATA SOURCE

- I) National Centre for Sustainable Coastal Management
  - 1) HTL, LTL 2) CVCA 3) CRZ - IA 4) Infrastructure Facilities such as Lighthouse, Road, Seawall, Breakwater/Jetty/Groyne.
- II) Survey of India
  - 1) Hazard Line
- III) Tamil Nadu State Coastal Zone Management Authority
  - 1) Administrative Boundaries,
  - 2) Infrastructure Facilities such as Health Center/Hospital, Helipad, Multipurpose Evacuation Centre, Education Institution, Fish Landing Centre, Fishing Harbour,
  - 3) Fish Drying or Boat Parking Area,
  - 4) Fisherman Settlement & Fishing ward,
  - 5) Port Limit etc.

PREPARED AS PER COASTAL REGULATION ZONE NOTIFICATION, 2019

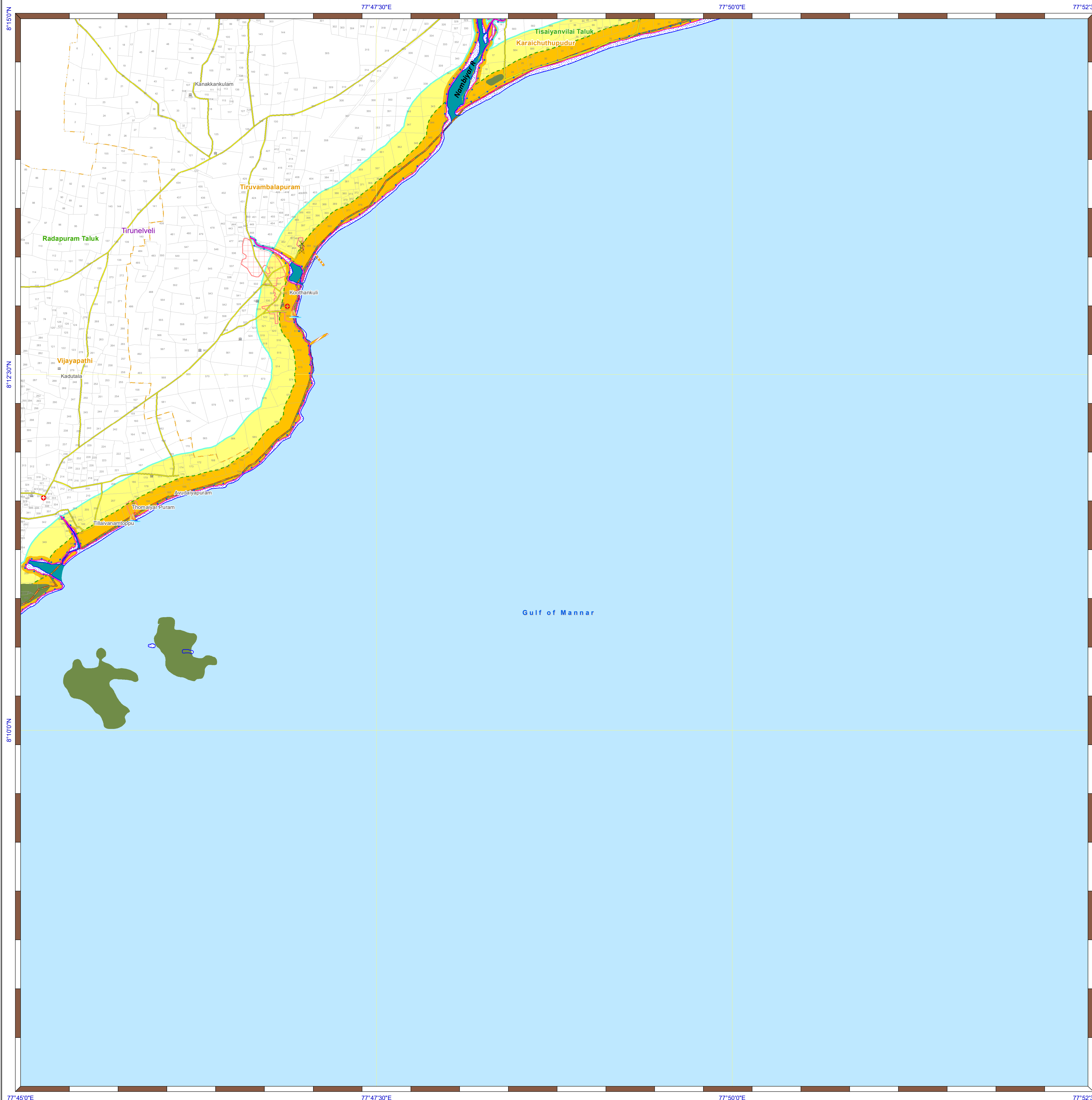
Prepared by



**National Centre for Sustainable Coastal Management**  
(Ministry of Environment, Forest & Climate Change)  
Chennai - 600 025



**Department of Environment and Climate Change**  
Government of Tamil Nadu





# DRAFT COASTAL ZONE MANAGEMENT PLAN TAMIL NADU

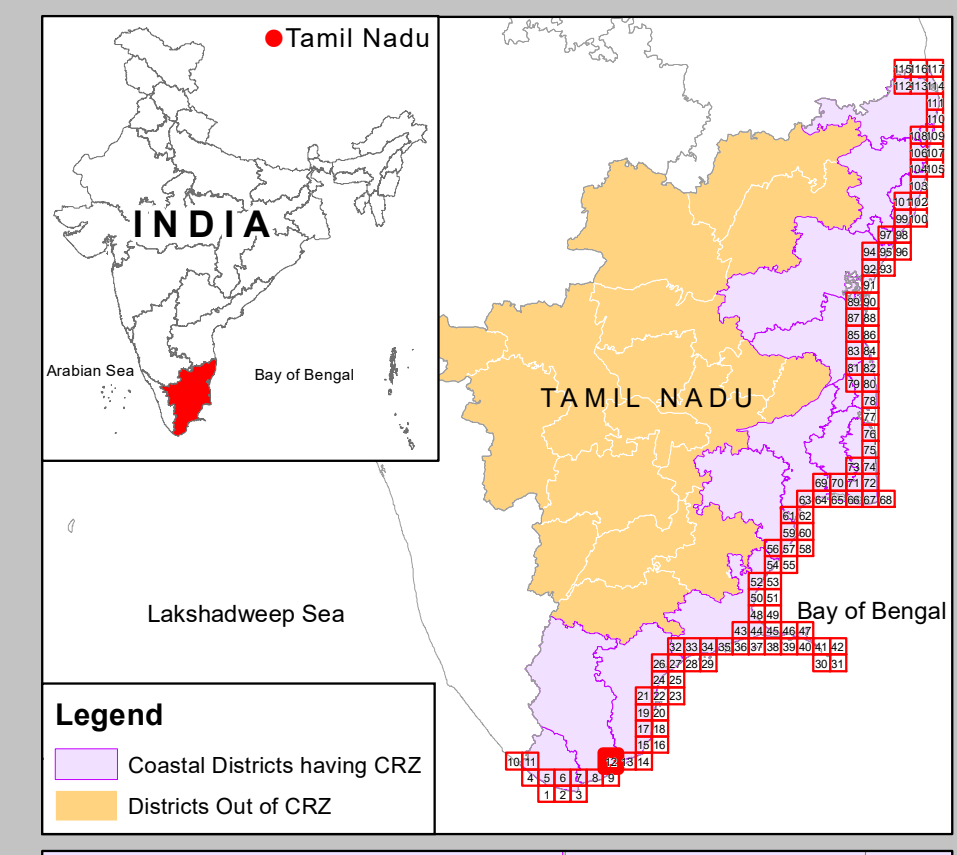
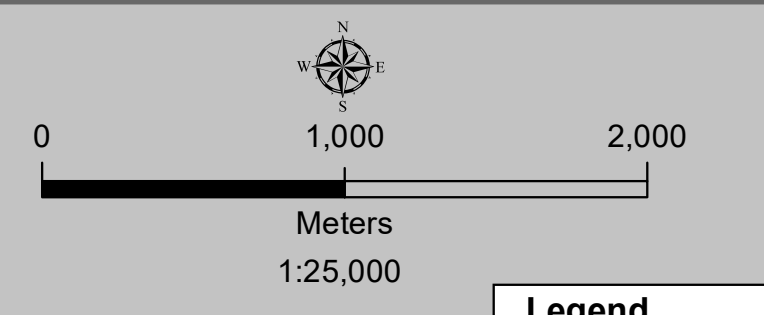
Tirunelveli & Thoothukudi Districts

Edition: June, 2023

Sheet No: C 43 X 15 / SW

Projection :- UTM Datum :- WGS 1984

Map No : TN 12



### Legend

- Coastal Districts having CRZ
- Districts Out of CRZ

### Legend

- Lighthouse
- Fish Landing Centre
- Fishing Harbour
- Fishing Port
- Helipad
- Health Center/Hospital
- Multipurpose Evacuation Centre
- Educational Institution
- Road
- Railway Line
- Seawall
- High Tide Line
- Low Tide Line
- Port Limit
- Fish Drying or Boat Parking Area
- Fisherman Settlement
- Fishing Wards
- Breakwater/Jetty/Groyne
- Survey Plots
- Village Boundary
- Municipal/Urban Boundary
- Taluk Boundary
- District Boundary

### CRZ Lines & Boundary

- Hazard Line
- 20m CRZ Line for Island\*
- 50m CRZ Line - CRZ IIIA (NDZ)
- 200m CRZ Line - CRZ IIIB (NDZ)
- CVCA Boundary
- CRZ Boundary
- Sand Dune Beyond CRZ Boundary (500m Line, 50m Line for Bay, 50m or width of the creek whichever is less along the tidal influenced water bodies and 50m Mangrove Buffer Zone)

### CRZ CATEGORY

- CRZ - I**
  - Eco Sensitive Zone - CRZ IA
  - CRZ - IA
  - 50 m Mangrove Buffer Zone - CRZ IA
  - CRZ - IB
- CRZ - II**
  - CRZ - II
- CRZ - III**
  - No Development Zone
  - 50 to 500m from HTL - CRZ IIIA
  - 200 to 500m from HTL - CRZ IIIB
- CRZ - IV**
  - CRZ - IVB
  - CRZ - IVA (Upto 12 NM)

### ABBREVIATIONS

- CRZ : Coastal Regulation Zone
- NDZ : No Development Zone
- CVCA : Critically Vulnerable Coastal Areas

### NOTE

- 1) CRZ - I areas are further classified on Land Use map and CZMP map shall be used along with Coastal Land Use map.
- 2) 50m Mangrove Buffer Zone is provided for both Government land and Private land.
- 3) ISLANDS: 20m CRZ Line from HTL is valid only after approval of IMP of the particular island. IMPs of the particular island shall be prepared by concerned States/UTs and got approved by MoEF&CC.

Updated During 2019 - 2022

### DATA SOURCE

- I) National Centre for Sustainable Coastal Management
  - 1) HTL, LTL 2) CVCA 3) CRZ - IA 4) Infrastructure Facilities such as Lighthouse, Road, Seawall, Breakwater/Jetty/Groyne.
- II) Survey of India
  - 1) Hazard Line
- III) Tamil Nadu State Coastal Zone Management Authority
  - 1) Administrative Boundaries,
  - 2) Infrastructure Facilities such as Health Center/Hospital, Helipad, Multipurpose Evacuation Centre, Education Institution, Fish Landing Centre, Fishing Harbour,
  - 3) Fish Drying or Boat Parking Area,
  - 4) Fisherman Settlement & Fishing ward,
  - 5) Port Limit etc.

## PREPARED AS PER COASTAL REGULATION ZONE NOTIFICATION, 2019

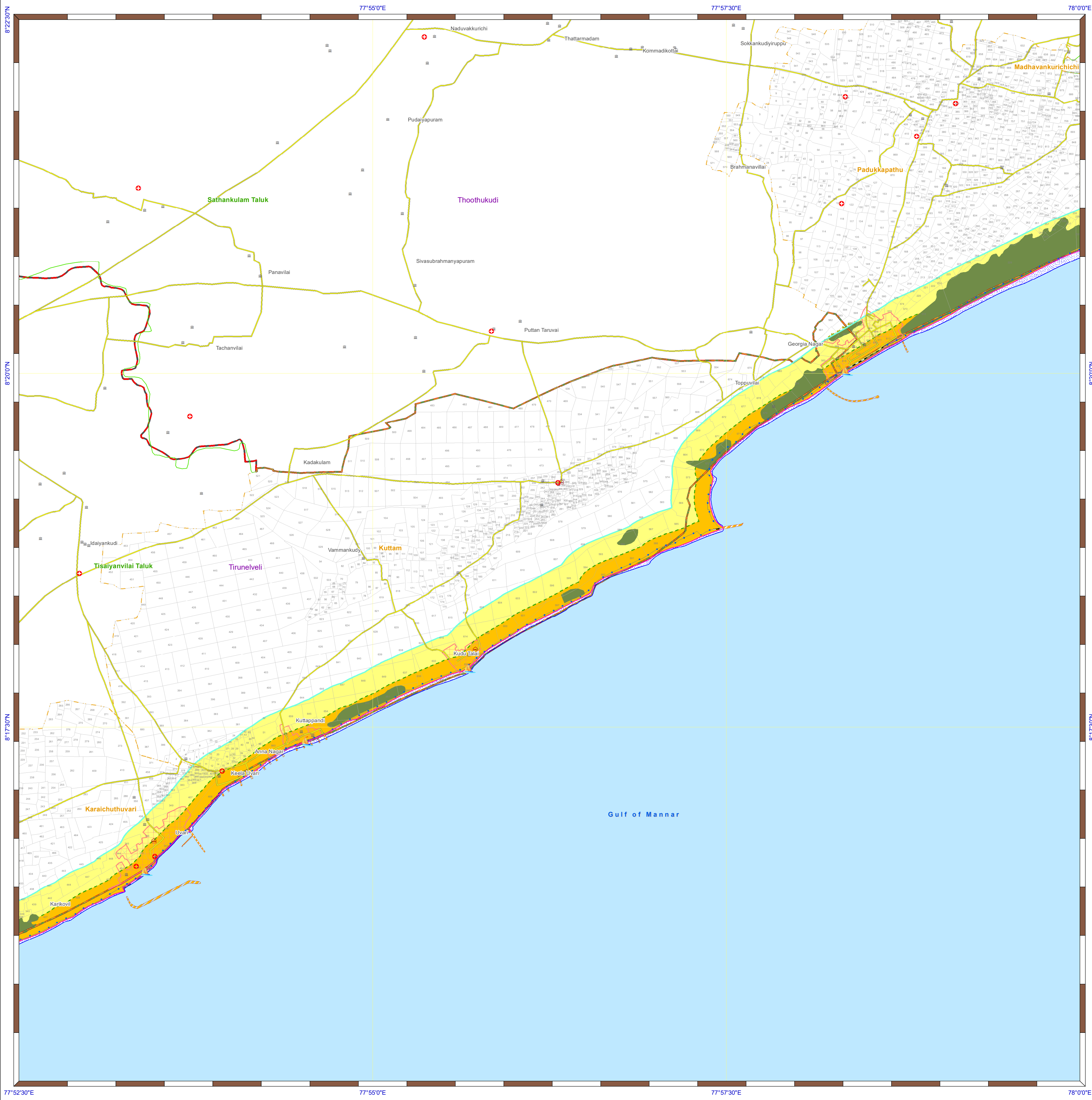
Prepared by



**National Centre for Sustainable Coastal Management**  
(Ministry of Environment, Forest & Climate Change)  
Chennai - 600 025



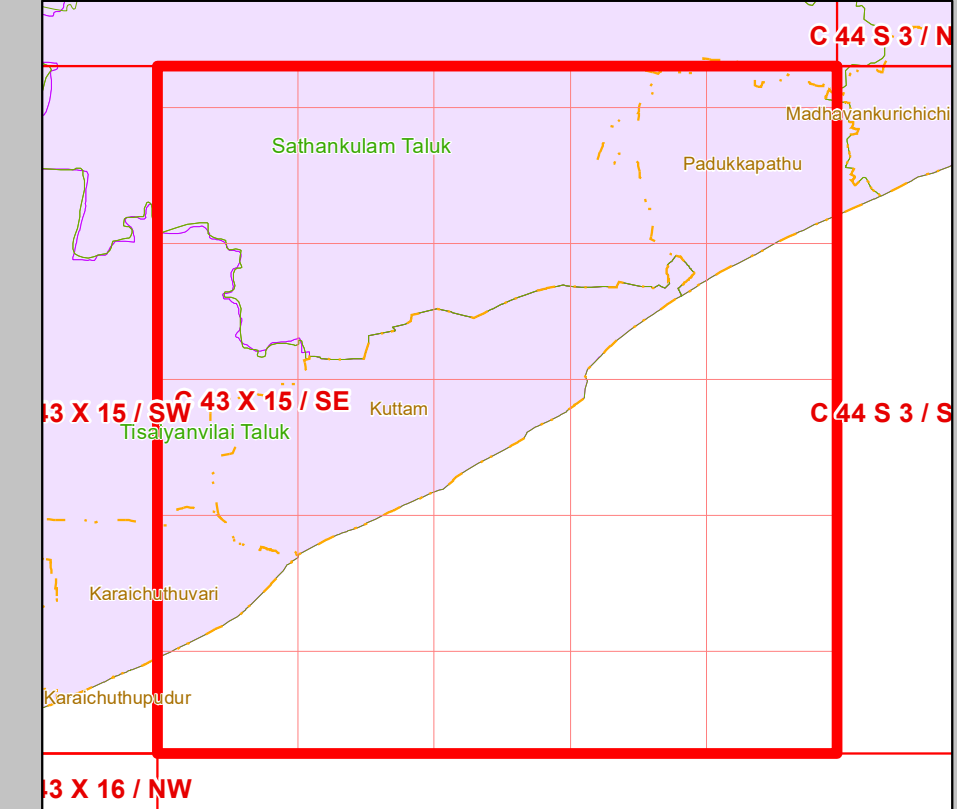
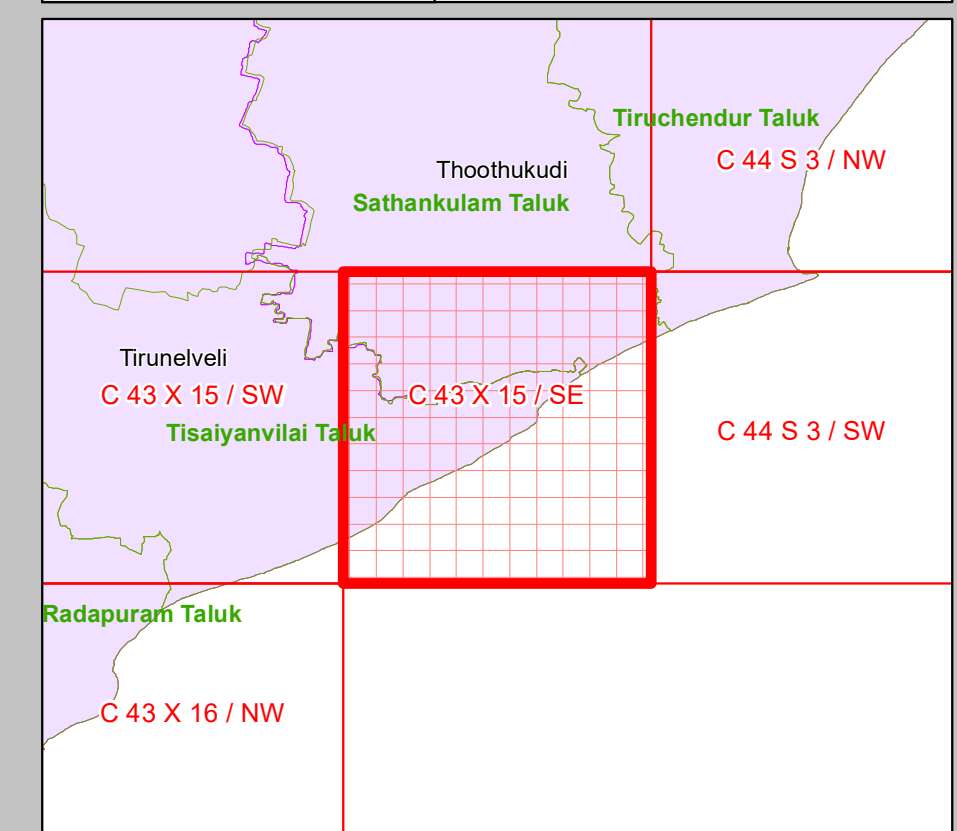
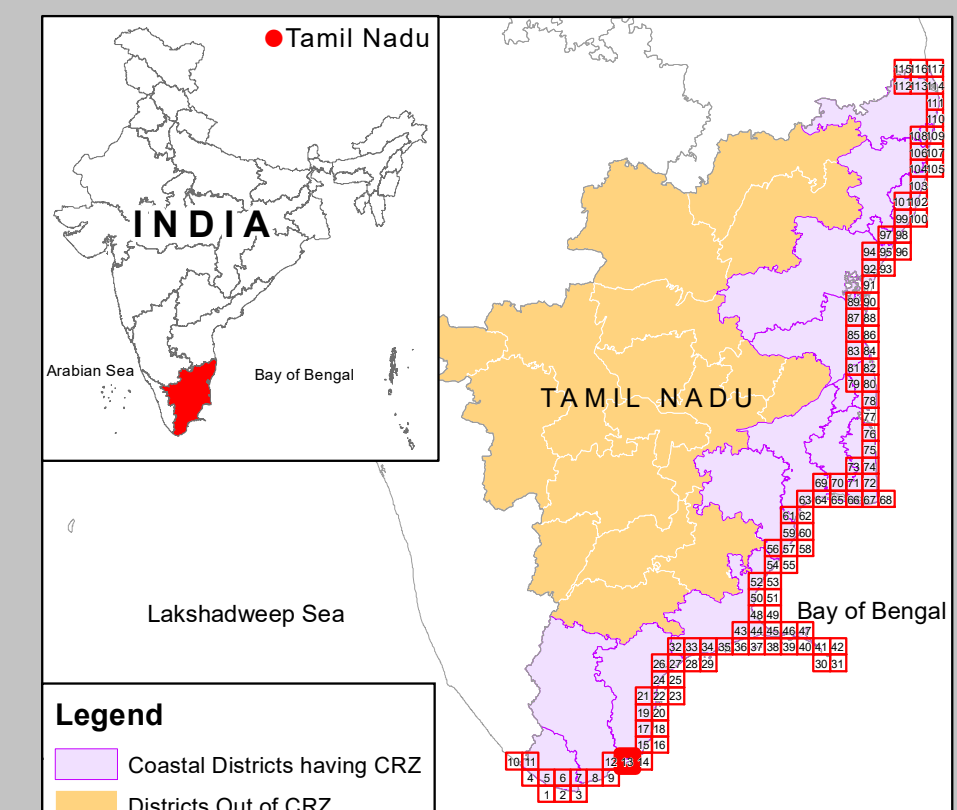
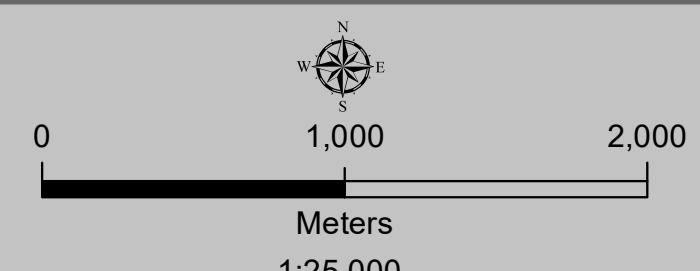
**Department of Environment and Climate Change**  
Government of Tamil Nadu



# DRAFT COASTAL ZONE MANAGEMENT PLAN TAMIL NADU

Tirunelveli & Thoothukudi Districts

Edition: June, 2023  
 Sheet No: C 43 X 15 / SE  
 Projection :- UTM Datum :- WGS 1984  
 Map No : TN 13



- Legend**
- Lighthouse
  - Fish Landing Centre
  - Fishing Harbour
  - Fishing Port
  - Helipad
  - Health Center/Hospital
  - Multipurpose Evacuation Centre
  - Educational Institution
  - Road
  - Railway Line
  - Seawall
  - High Tide Line
  - Low Tide Line
  - Port Limit
  - Fish Drying or Boat Parking Area
  - Fisherman Settlement
  - Fishing Wards
  - Breakwater/Jetty/Groyne
  - Survey Plots
  - Village Boundary
  - Municipal/Urban Boundary
  - Taluk Boundary
  - District Boundary

- CRZ Lines & Boundary**
- Hazard Line
  - 20m CRZ Line for Island\*
  - 50m CRZ Line - CRZ IIIA (NDZ)
  - 200m CRZ Line - CRZ IIIB (NDZ)
  - CVCA Boundary
  - CRZ Boundary
  - Sand Dune Beyond CRZ Boundary (500m Line, 50m Line for Bay, 50m or width of the creek whichever is less along the tidal influenced water bodies and 50m Mangrove Buffer Zone)

- CRZ CATEGORY**
- CRZ - I**
- Eco Sensitive Zone - CRZ IA
  - CRZ - IA
  - 50 m Mangrove Buffer Zone - CRZ IA
  - CRZ - IB
- CRZ - II**
- CRZ - II
- CRZ - III**
- No Development Zone
  - 50 to 500m from HTL - CRZ IIIA
  - 200 to 500m from HTL - CRZ IIIB
- CRZ - IV**
- CRZ - IVB
  - CRZ - IVA (Upto 12 NM)

- ABBREVIATIONS**
- CRZ : Coastal Regulation Zone
  - NDZ : No Development Zone
  - CVCA : Critically Vulnerable Coastal Areas

- DATA SOURCE**
- I) National Centre for Sustainable Coastal Management
    - 1) HTL, LTL 2) CVCA 3) CRZ - IA 4) Infrastructure Facilities such as Lighthouse, Road, Seawall, Breakwater/Jetty/Groyne.
  - II) Survey of India
    - 1) Hazard Line
  - III) Tamil Nadu State Coastal Zone Management Authority
    - 1) Administrative Boundaries,
    - 2) Infrastructure Facilities such as Health Center/Hospital, Helipad, Multipurpose Evacuation Centre, Education Institution, Fish Landing Centre, Fishing Harbour, Fish Drying or Boat Parking Area,
    - 3) Fisherman Settlement & Fishing ward,
    - 4) Port Limit etc.

- NOTE**
- 1) CRZ - I areas are further classified on Land Use map and CZMP map shall be used along with Coastal Land Use map.
  - 2) 50m Mangrove Buffer Zone is provided for both Government land and Private land
  - 3) ISLANDS: 20m CRZ Line from HTL is valid only after approval of IMP of the particular island. IMPs of the particular island shall be prepared by concerned States/UTs and got approved by MoEF&CC.

Updated During 2019 - 2022

**PREPARED AS PER COASTAL REGULATION ZONE NOTIFICATION, 2019**

Prepared by

**National Centre for Sustainable Coastal Management**  
 (Ministry of Environment, Forest & Climate Change)  
 Chennai - 600 025

**Department of Environment and Climate Change**  
 Government of Tamil Nadu